

# Personal Protective Equipment Best Practices



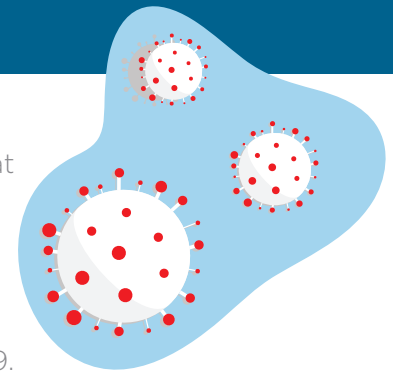
Conduct your risk assessment

## Personal protective equipment (PPE)

is equipment worn to minimize exposure to hazards that cause serious workplace injuries and illnesses.

## ISSA-GBAC General Guidance for PPE

is intended for workers or individuals who enter spaces to clean and disinfect, where an infected or potentially infected individual is or has been located with COVID-19.



**In situations where there is a potentially infectious or confirmed infectious person present, the minimum personal protective equipment (PPE) guidance requires:**



### Respirators

N95 respirators protect against airborne particles and liquid.

### Eye protection

Goggles or reusable face shields.

### Gloves

Disposable gloves that can be changed frequently.

### Gowns

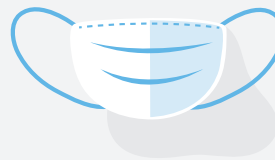
Disposable gowns or coverings to reduce the chances of contaminating clothing.

### Shoe covers

Dedicated shoes or shoe covers.



**In areas where an infectious individual has been, but is no longer present, minimum PPE recommendations include:**



### Masks

Surgical masks or similar prevent accidental contact between the wearer's hands, nose, and mouth.

### Eye protection

Goggles or reusable face shields.

### Gloves

Disposable gloves that can be changed frequently.

### Gowns

When disposable gowns are unavailable, a protocol for laundry must be in place.

### Shoe covers

Dedicated shoes or shoe covers.



**In addition to PPE to protect employees from infectious diseases, cleaning workers may also need PPE to protect them from the hazards associated with the cleaning products and disinfectant systems they use.**

**Employers must provide workers with training and demonstration of:**



- When to use PPE
- What PPE is necessary
- Any limitations of the PPE
- Applying and removing PPE to prevent contamination
- Proper disposal of PPE
- How to clean, decontaminate, and maintain reusable PPE between uses



In the U.S. employers should select appropriate PPE and provide it in accordance with **U.S. Department of Labor's Occupational Safety and Health Administration's (OSHA) standard 1910 Subpart I - Personal Protective Equipment.**

ISSA, the worldwide cleaning industry association, and the Global Biorisk Advisory Council, a division of ISSA, are here to help cleaning industry professionals understand how to properly clean and safely disinfect for the novel coronavirus. For more information about disinfecting for coronavirus, visit [www.issa.com](http://www.issa.com)

**GBAC**  
GLOBAL BIORISK ADVISORY COUNCIL  
A Division of ISSA

**ISSA**  
Advancing Clean. Driving Innovation.